

## **PERSPECTIVES**

### **The Etiology of Intervertebral Disc Degeneration**

**Leonid Kalichman**

***Department of Physical Therapy, Recanati School for Community Health Professions, Faculty of Health Sciences, Ben-Gurion University of the Negev, Beer Sheva, Israel***

---

#### **Abstract**

Intervertebral discs are pads of fibrocartilage having the capacity to maintain stability under a wide variety of loading conditions, while permitting intersegmental motion of the spine and showing degenerative and aging changes earlier than any other connective tissue in the body. Disc degeneration may manifest as disc space narrowing, disc bulging, protrusion, extrusion, sequestration, annular tears, reduced signal intensity on magnetic resonance imaging, Schmorl's nodes and vertebral rim osteophytes. It is believed to be clinically important since disc degeneration has been found to be associated with back pain. This *Perspective* describes how disc degeneration can be distinguished from normal disc aging and reviews factors associated with intervertebral disc degeneration, with a focus on genetic factors in particular. *IBMS BoneKEy*. 2010 November;7(11):388-405.

©2010 International Bone & Mineral Society

---

#### **Introduction**

Intervertebral discs (IVDs) are unique structures with the capacity to maintain stability under a wide variety of loading conditions, while permitting intersegmental motion of the spine (1). Degenerative changes in lumbar IVDs are multifarious. Disc space narrowing, disc bulging, protrusion, extrusion, sequestration, annular tears, reduced signal intensity on magnetic resonance imaging (MRI), Schmorl's nodes and vertebral rim osteophytes are all manifestations of intervertebral disc degeneration (IDD). MRI studies have shown that IDD can begin as early as the second decade and increases linearly with age; hence at 70 years of age, 80% of all lumbar discs are abnormal (2-4). Moreover, by the age of 50, 85-95% of adults show evidence of IVD degeneration on autopsy.

Most recent publications have tried to distinguish between aging and IDD, although there seems to be a correlation between the two processes. Disc degeneration due to normal aging is a product of lifelong degradation with synchronized remodeling of discs and neighboring vertebrae, including

simultaneous adaptation of the disc structures to changes in physical loading and responses to the occasional injury (4). Adams and Roughley (5) defined the IVD degenerative process as corresponding mainly to pathological changes, stating that the IDD process is an aberrant, cell-mediated response to progressive structural failure. IDD is the response of the disc to secondary injury and inflammation whereas disc aging represents a normal progression of the maturation process, with associated cellular and molecular changes. A degenerate disc is one with structural failure combined with accelerated or advanced signs of aging. A degenerate disc that is also painful should be referred to as degenerative disc disease.

#### **Imaging Methods of IDD Evaluation**

Plain radiographs are still widely used today, as they are accessible and cheap. On a standard x-ray, disc space narrowing and vertebral body shapes can be recognized easily (Fig. 1). Initially, disc space narrowing was perhaps the most commonly used specific finding indicating IDD in clinical imaging. Severe disc space narrowing is an obvious sign of IDD, and single-level severe



Fig. 1. An x-ray of the lateral lumbar spine with intervertebral disc narrowing and anterior osteophytes at L3-L4 and L4-L5 spinal levels.

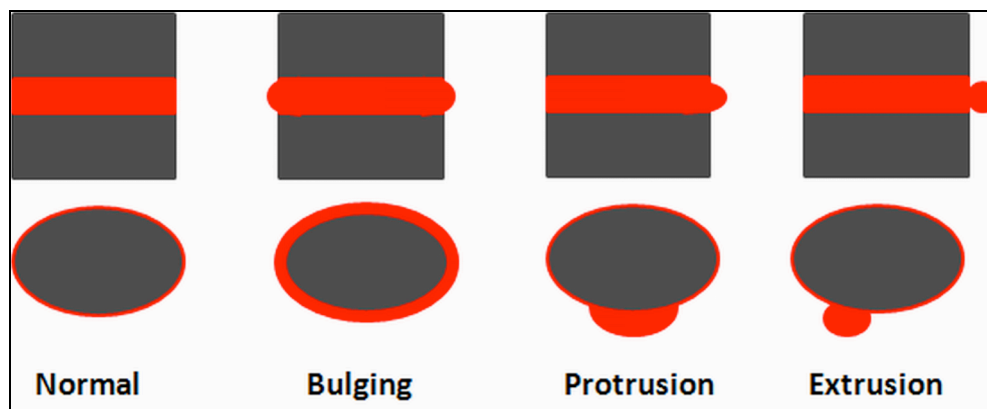


Fig. 2. Schematic representation of a morphological nomenclature based on a two-dimensional assessment of the disc contour. *Normal disc*: absence of DEBIT. *Bulging disc*: circumferential, symmetric DEBIT. *Protrusion*: focal or asymmetric DEBIT; the base against the parent disc is broader than any other diameter of the protrusion. *Extrusion*: focal, obvious DEBIT; the base against the parent disc is narrower than the diameter of the extruded material itself, or there is no connection with the parent disc. DEBIT = disc extension beyond the interspace.

narrowing is thought more likely to reflect a traumatic or biomechanical etiology than a systemic one. Vertebral rim osteophytosis has also been used frequently as an indicator of IDD. Computed tomography (CT) scanning can detect the shape of the discs. Use of this technology has led to the development of new nomenclature for disc lesions based on assessment of the disc contour (6) or more specifically, the observed “disc extension beyond the interspace” (DEBIT). Discs are classified as

normal, bulging, protruding or extruding (Fig. 2 and Fig. 3). At present, MRI is the preferred method of IDD evaluation (Fig. 4), since it allows simultaneous evaluation of various phenomena, such as disc space narrowing, bulging, protrusion or extrusion of discs, signal intensity changes in the disc and the vertebral body marrow adjacent to the endplates of the degenerated discs (Modic (7) changes), etc. Table 1, modified and adopted from Milette (8), summarizes the parameters that may differentiate a

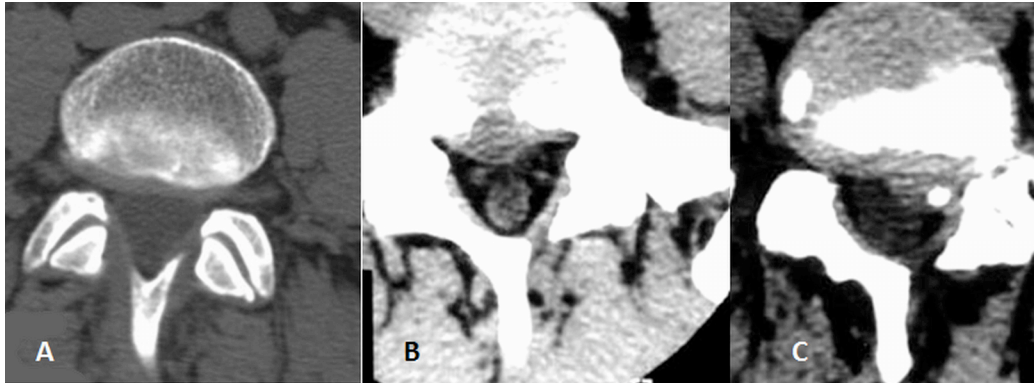


Fig. 3. Examples of intervertebral disc bulging (A), protrusion (B) and extrusion (C) on axial CT images.



Fig. 4. A midsagittal T2-weighted MRI illustrating early imaging signs of disc degeneration (reduced brightness of T2-signal sometimes called a “dark disc” and the presence of disc bulging) at L4-5 and L5-S1.

normal aging disc from a pathologically degenerated one. In addition to the imaging studies, information gained from microscopic, histological, or biochemical analysis, as well as surgical and autopsy samples can provide a macroscopic measurement of disc degeneration (9).

#### Disc Aging

Matrix synthesis decreases steadily throughout life but occasionally increases again in old and severely disrupted discs (10). IVD cells are continuously subjected to hypoxia, low pH, low nutrition, and high pressure (11). The concentration of cells in

the disc declines with age, especially in the annulus (12;13). They are subject to senescence, lose their ability to proliferate and may induce degeneration by decreased anabolism or increased catabolism (14;15). The appearance of necrotic and apoptotic cells is also very common. Trout et al. found that > 50% of adult disc cells are necrotic (13).

The rate of proteoglycan synthesis decreases with age, both in the annulus and nucleus (16;17). Furthermore, the proteoglycans produced are smaller (18;19) and less aggregated (17). The concentration of chondroitin sulphate lessens with

Table 1. Differentiating features of the normal aging disc and the pathologically changed disc\*.

| Criterion                     | Normal disc aging                 | Pathological changes                |
|-------------------------------|-----------------------------------|-------------------------------------|
| <b>Clinical</b>               |                                   |                                     |
| Age                           | > 40                              | All ages                            |
| Symptoms                      | None                              | Frequent                            |
| History of LBP                | Probable                          | Frequent                            |
| History of inciting event     | None                              | Probable                            |
| <b>X-ray and CT</b>           |                                   |                                     |
| Disc space height             | Normal or uniformly decreased     | Decreased at the pathologic level/s |
| Posterior disc margin         | Regular                           | Irregular                           |
| Vertebral bodies              | Normal or with osteoporotic signs | Sclerosis of end-plates             |
| Osteophytes                   | Anterolateral                     | All directions                      |
| Intradiscal gas               | None or anterolateral             | Central                             |
| Number of affected discs      | All                               | Variable                            |
| <b>MRI</b>                    |                                   |                                     |
| Vertebral body marrow         | Normal for age group              | Type 2 or 3 Modic (7) changes       |
| Central disc signal intensity | Slight decrease                   | Marked decrease                     |

\*Adopted with modification from Milette PC (8). LBP = low back pain.

increasing age, resulting in a rise in the keratan sulphate to chondroitin sulphate ratio (20). The collagen content of the nucleus increases and changes from type II to type I (16;21;22), rendering the nucleus more fibrous (23). The non-collagenous proteins in the nucleus also increase (24;25). Increased collagen and increased collagen-proteoglycan binding leave fewer polar groups of the proteoglycans available to bind water (22). The nucleus becomes progressively more solid, dry and granular (26), with cracks appearing in the desiccated, fibrous nucleus (23). The collagen lamellae of the annulus increase in thickness and become further fibrillated (27); cracks and cavities may develop within (16).

#### Characteristics of the Degeneration Process

Advanced IDD is associated with vertebral body osteophytes, increased bone density

or sclerosis of the vertebral bodies adjacent to the disc, and facet joint osteoarthritis (Fig. 1). IVD narrowing has previously been considered one of the signs of lumbar spine aging (26;28), however, post-mortem studies have shown that lumbar discs do not narrow with age. Similarly, although pathologists regard annulus tears as a degenerative change (23;26), it has been shown that radial tears do not correlate with age (29). These fissures are probably indicative of the degenerative process.

#### Juvenile Disc Degeneration

Scheuermann in 1921 (30) and later Schmorl (31) described changes in the vertebral endplates and disc space that occur during the growing years (mostly in boys) and can thus lead to kyphosis in the thoracic spine (Scheuermann's disease or juvenile kyphosis). They also described adolescent degenerative disc disease

(juvenile disc disorder or lumbar Scheuermann's disease) where the endplates are not strong enough to withstand the pressures generated within the disc spaces, thus leading to disc herniations into the vertebral bodies (Schmorl's nodes), causing back pain at an early age. This condition is very similar to IDD in the adult population, but the degeneration begins at a much earlier age and usually involves most of the lumbar spine discs (as opposed to only one or two typically involved in adult IDD) (32).

### Association with Pain

Degenerative changes in IVDs can contribute to the development of low back pain (LBP) and acute lumbar radiculopathy associated with disc herniation (4;16;33;34). In their systematic review of observational studies, van Tulder *et al.* suggested an association between lumbar IDD and LBP with odds ratios varying between 1.3 and 3.2 (35). Back pain is associated with disc prolapse (36) and radial fissures (29;37), especially when reaching the disc exterior, *i.e.*, disc extrusion (38). Internal disc disruption, with inward collapse of the annulus was also found to be associated with pain (39). Several studies have reported back pain due to disc narrowing (37;40-44), with increasing severity of the disc narrowing (41;44;45). Endplate fracture, Schmorl's nodes (46), disc bulging (36;37;46;47) and disc signal intensity on MRI (37) showed little if any relationship to pain.

Normal IVDs are poorly innervated and supplied only by sensory and sympathetic perivascular nerve fibers. Most of the studies performed in different animal species, including in humans, have demonstrated that nerve fibers in IVDs are found mostly on the periphery (1-3 mm) of the annulus fibrosus (48). Endplate innervation is centrally concentrated, adjoining the nucleus (49). Pain provocation studies associate severe LBP with relatively innocuous mechanical stimulation of the outer posterior annulus and endplate (50). Interestingly, in humans and animal models of IDD, the number of nerve fibers in the disc increases (51;52), however, the

mechanisms responsible for nerve growth and hyperinnervation of the degenerated disc have not been fully elucidated.

### Factors Associated with Disc Degeneration

Age, heavy physical loading, injury, vibration, infection and smoking have been reported as risk factors (53-55) for IDD. However, results of recent studies suggest that genetic factors/heredity play a dominant role in IDD (56). A review article by Battié *et al.* (57) concluded with the statement that "the genetically determined 'natural progression of disc degeneration' is modified to some degree by behavioral and environmental factors." Adams and Roughley (5) defined the underlying cause of IDD as tissue weakening occurring primarily from genetic inheritance, aging, nutritional compromise, and loading history. Modic and Ross (58) suggested that many interactive factors such as mechanical, traumatic, nutritional, genetic and environmental factors may play a role in the disc degeneration cascade, albeit to variable degrees in different individuals.

Hereditary factors could affect IDD through several mechanisms, *i.e.*, through an influence on size and shape of spinal structures, which then affect the spine's mechanical properties and thus producing vulnerability to external forces. Biological processes associated with the synthesis and breakdown of the disc's structural and biochemical constituents could be genetically predetermined. Identification of specific genetic influences may eventually provide key insights into underlying mechanisms.

With this dramatic change in the current view of risk factors for IDD from one where age and mechanical factors were paramount, to the current theory that genetic risk factors are predominant, the remainder of this *Perspective* reviews the mechanical and nutritional factors, and the genetic influences, on IDD, beginning with familial aggregation and heritability estimation and concluding with specific studies of genes associated with IDD.

### **Age, Sex and Body Weight**

The association between age and IDD has been well-established. Utilizing 600 autopsy specimens from 273 cadavers, Miller *et al.* estimated that the prevalence of IDD increases from 16% at age 20 to about 98% at age 70 (59). The authors also noted that lumbar IDD first appeared in 11- to 19-year-old males and approximately 10 years later in females. Numerous recent studies used different modalities for IDD definition, confirming the association between age and IDD (40;60-64).

Miller *et al.* (59), in an autopsy study, found that male discs were more degenerated than female discs at most ages. Similar results were described in MRI (65) and surgical (66) studies. On the other hand, several recent imaging studies found no association between sex and IDD (63;67).

A number of studies have described the association between obesity and increased risk of disc degeneration (68-70). A recent large study of twins (71) showed that adjusting for age, sex, zygosity, and relatedness of twins, an independent effect of body mass index on IDD summary score was attributable to significant contributions from both disc signal intensity and disc height.

### **Mechanical Load and Injury**

For many years, abnormal mechanical loads and injury, often work-related, were considered major contributors to IDD. It was thought that these injuries lead to IDD, clinical symptoms and LBP (72-74). However, recent studies using MRI scanning to identify IDD classifications have shown that although factors such as occupation, psychosocial factors, benefit payments and environment are linked to disabling LBP (75), contrary to previous assumptions, these factors have little influence on the pattern of IDD itself (76;77).

Regardless, it is difficult to disregard the numerous epidemiological studies that have found associations between physical loading and the development of LBP and IDD. These studies have found heavy physical

work, baseball and swimming activities during youth (78), lifting (70), professional driving (79-81), frequent bending (81) and obesity (68;82) to be risk factors for IDD. The association between physical loading and IDD was supported by animal models (83;84). Eck *et al.* found that abnormal mechanical forces in IDD cause disc levels adjacent to a fused segment to degenerate rapidly (85).

IVDs are constantly subjected to compression loads, but normally can withstand this pressure. However, these compression forces might influence disc cell metabolism. Depending on the duration, magnitude, and type (static or cyclic) of compressive loads, reversible or irreversible degeneration occurs (86). Torsion load – resulting from rotational movements – can also lead to endplate damage or annulus tear, which leads to IDD (87). It has been suggested that mechanical factors produce endplate damage, the antecedent to IDD (73). There is a strong association between degeneration and defects in the endplate from Schmorl's nodes (46;88), Scheuermann's disease (89) and fractures (90), with an increased incidence of disc prolapse, particularly at the lower lumbar levels (46).

### **Nutritional Pathways to Disc Degeneration**

One of the causes of IDD is thought to be failure of the nutrient supply to the disc cells (91). The disc is large and avascular. The cells receive the nutrients and remove metabolic waste through the blood vessels at the disc margins (92). The nucleus cells are supplied virtually entirely by capillaries originating in the vertebral bodies, penetrating the subchondral plate and terminating just above the cartilaginous endplate (93). This source of nutrition is at great risk in the aging disc, as the permeability of the endplate diminishes with advancing age (91;93). A detrimental effect of decreased blood supply from the endplate results in tissue breakdown, starting in the nucleus. A recent study has shown that this process may begin early in the second decade of life (94).



Scant information is available regarding the association between nutrient supply and IDD. There is some evidence that nutrient transport is affected in IDD *in vivo* (95). The importance of normal blood flow to the homeostatic nutritional process in the IVD complex has been suggested as an explanation for the association of atherosclerosis and aortic calcification with increased IDD and subjective LBP (96).

The association between smoking and IDD, noted in several studies (62;97-99), may also be attributed to nutritional deficiencies. Smoking causes constriction of arterioles, resulting in anoxia to cells induced by carboxyhemoglobin (100). This theory is supported by animal studies, which have demonstrated that nicotine facilitates IDD by decreasing the blood supply to the disc (101). Finally, even if the blood supply remains undisturbed, nutrients may not reach the disc cells if the cartilaginous end-plate calcifies (91;102). A loss of water volume within the nucleus pulposus results in decreased disc pressure and reduced disc height (16). Thus, although there is as yet little direct evidence, it seems apparent that a decrease in nutrient supply will eventually lead to IDD.

### **Genetic Factors in Disc Degeneration**

Recent studies have suggested that genes play a crucial role in IDD. Assessing a genetic influence usually starts with a familial aggregation evaluation. The next step is to distinguish between genetic and environmental sources of familial aggregation as well as to estimate the heritable proportion of IDD variability. Finally, specific gene effects, gene-gene interactions, and gene-environment interactions need to be evaluated.

### **Familial Predisposition and Heritability Estimation**

The first descriptions of familial predisposition for lumbar IDD were found in juvenile and adolescent populations (103-106). The study of juvenile lumbar disc herniation is especially interesting since in young patients, normal disc aging and risk factors such as occupation, smoking and

comorbidities have little, if any, influence on disease predisposition. Numerous studies have also provided solid evidence of the existence of a familial predisposition to IDD in adults (82;107-110). Results from a study of healthy volunteer male monozygotic (MZ) twin pairs (111) demonstrated substantial familial aggregation of lumbar IDD. Whereas smoking status and age explained 0-15% of the variability in the various degenerative findings in the discs, 26-72% of the variability was explained with the addition of a variable representing co-twin status. These results suggest a substantial familial influence on lumbar disc height narrowing, bulging or herniation, and disc desiccation.

In a retrospective cohort study of 115 pairs of male MZ twins, lumbar MRIs were assessed to investigate the relative effects of environmental exposures, age and familial aggregation on disc bulging, height narrowing, and disc desiccation (60). In a multivariate analysis of the T12-L4 region, physical loading explained 7% of the variance in IDD summary scores; an additional 9% was explained by age and another 61% by familial aggregation. The observations and studies in juveniles and adults provide convincing evidence for familial predisposition in two different, but related phenotypes: 1) in individuals who underwent surgery of the lower spine due to lumbar intervertebral disc herniation, *i.e.*, those who suffer from a severe degenerative condition and 2) in a sample of healthy volunteers, *i.e.*, as distinct from symptomatic subjects who may represent different ends of the IDD spectrum.

Heritability estimations performed in one classic twin study (112) and two cohort studies (62;113) found a high heritable component for IDD:  $H = 0.73-0.75$ . Results of a segregation analysis (62) showed that the model of inheritance assuming a major gene effect and Mendelian transmission of susceptibility to multiple disc herniations was rejected, indicating a more complex mode of intergenerational transmission.

### **Associated Genes**

There are a number of genes that have been associated with IDD in humans,

including the genes coding for collagen I (*COL1A1*) (114;115), collagen IX (*COL9A2* and *COL9A3*) (116-126), collagen XI (*COL11A2*) (120;124), interleukin-1 (*IL-1*) (127;128), interleukin-6 (*IL-6*) (120), vitamin D receptor (*VDR*) (129-134), aggrecan (*ACAN*) (135-138), SRY (sex determining region Y)-box 9 (*SOX9*) (139;140), matrix metalloproteinase 3 (*MMP-3*) (120;131;141) and cartilage intermediate-layer protein (*CILP*) (128;142). At present, only the associations of *COL1A1*, *COL9A2*, *ACAN*, *MMP-3* and *VDR* with IDD have been verified in different ethnic populations. Among the possible reasons for replication deficiency is the complexity of the IDD process, the different phenotypes used in genetic studies, and the different sample sizes. For example, an association between *COL9A3* and IDD was found in a Finnish population by two different research groups (121;124) using MRI to define the phenotype of IDD. However, in a study performed in a Greek population (118), x-rays and/or back surgery were used as an IDD phenotype, and no association was found. In this case, we cannot be sure if the reason for a lack of association was the different ethnicity of the subjects studied or the different phenotypes used. Another factor that needs to be considered is the subjects' ages. It is possible that a particular gene is associated with IDD only at a certain age. Takahashi *et al.* (141) found that the 5A5A and 5A6A genotypes of *MMP-3* in the elderly were associated with a significantly larger number of degenerative IVDs than the 6A6A genotype ( $p < 0.05$ ), but there was no significant difference in young individuals. The products of these genes probably affect the quality of the skeletal tissues. Their systemic effects may explain the association between disc degeneration and osteoarthritis (40) or, on the other hand, a positive, genetically-mediated association between lumbar disc degeneration and hip bone mineral density (BMD) (143). It is worth mentioning that all candidate gene studies have demonstrated only a modest level of association. A risk still exists that these associations are false positives. Until new studies showing a high level of association ( $P < 5 \times 10^{-8}$  is commonly accepted in genetic studies) are performed,

these findings need to be discussed with a great degree of caution.

An important but extremely complicated aspect of understanding the genetics of IDD is gene-gene and gene-environment interactions. Solovieva *et al.* (123) presented evidence suggesting that the effect of weight on lumbar disc degeneration was modified by *COL9A3* polymorphisms in Finnish men; 45 to 71% of disc degeneration among persistently obese individuals with the *Trp3* allele could be attributed to the synergism of *COL9A3* polymorphisms and persistent obesity. Another example of gene-environment interaction was demonstrated in a later study by Solovieva *et al.* (127) suggesting that *IL-1* cluster polymorphisms modified the effect of occupation on disc bulges. The negative effect of physical workload on IDD for carpenters was exaggerated by the presence of a minor allele of the polymorphism in all studied genes. For machine drivers, the effect of occupational load on bulges was modified only by the presence of the *IL-1 $\alpha$ T<sup>889</sup>* allele. A recent study from China (144) showed additive and multiplicative interaction between the aggrecan gene variable number of tandem repeat (VNTR) polymorphisms and smoking in symptomatic IDD.

There is also evidence for gene-gene interaction (124). Multivariate logistic regression analysis showed that the carriage of *COL9A3* in the absence of the *IL-1 $\beta$ -T(3954)* allele increased the risk of dark nucleus pulposus (OR 7.0, 95% CI: 1.3-38.8). There was no effect of *COL9A3* on disc degeneration in the presence of the *IL-1 $\beta$ -T(3954)* allele. These results suggest that the effect of the *COL9A3* polymorphism on IDD might be modified by the *IL-1 $\beta$*  polymorphism.

Candidate gene association studies have limitations in detecting the genetic basis of the disease because this approach relies on predicting the correct genes based on biological hypotheses or the location of the known linkage regions. The genome-wide association approach has no assumptions regarding the location of the causal variants and represents an unbiased yet fairly



comprehensive approach even in the absence of knowledge of the function or location of the causal genes (145). Additional studies, including linkage analyses and whole genome scan studies in different populations, are required in order to improve our understanding of the influence of the aforementioned genes on IDD and to identify novel genes.

### Conclusions

IDD is a very prevalent condition with various manifestations such as disc space narrowing, disc bulging, protrusion, extrusion and sequestration, annular tears, reduced signal intensity on MRI, Schmorl's nodes and vertebral rim osteophytes, causing LBP and acute lumbar radiculopathy associated with disc herniation. To facilitate the study of IDD, it is important to distinguish between age-related disc changes and manifestation of pathological IDD. Age, heavy physical loading, injury, vibration, failure of the nutrient supply to the disc cells, infection and smoking have been reported to be risk factors for IDD. However, the results of recent studies suggest that genetic factors/heredity play a dominant role in IDD.

Familial history must be an essential part of the medical history of individuals suffering from LBP and can strengthen a clinical diagnosis of IDD. Family history may provide a cost-effective means of identifying high-risk individuals who could benefit from aggressive preventative strategies (109). There are a number of genes associated with IDD in humans, including genes coding for collagen I, collagen IX, collagen XI, IL-1, IL-6, VDR, aggrecan, SOX9, MMP-3 and CILP. Additional studies, including linkage analyses and whole-genome scan studies in different populations, are required to improve our understanding of the influence of the aforementioned genes on IDD and to identify novel genes.

**Conflict of Interest:** None reported.

**Peer Review:** This article has been peer-reviewed.

### References

1. Bogduk N, Twomey LT. *Clinical Anatomy of the Lumbar Spine*. New York, NY: Churchill-Livingstone; 1987.
2. Powell MC, Wilson M, Szypryt P, Symonds EM, Worthington BS. Prevalence of lumbar disc degeneration observed by magnetic resonance in symptomless women. *Lancet*. 1986 Dec 13;2(8520):1366-7.
3. Videman T, Battié MC, Gill K, Manninen H, Gibbons LE, Fisher LD. Magnetic resonance imaging findings and their relationships in the thoracic and lumbar spine. Insights into the etiopathogenesis of spinal degeneration. *Spine (Phila Pa 1976)*. 1995 Apr 15;20(8):928-35.
4. Battié MC, Videman T. Lumbar disc degeneration: epidemiology and genetics. *J Bone Joint Surg Am*. 2006 Apr;88 Suppl 2:3-9.
5. Adams MA, Roughley PJ. What is intervertebral disc degeneration, and what causes it? *Spine (Phila Pa 1976)*. 2006 Aug 15;31(18):2151-61.
6. Brant-Zawadzki MN, Jensen MC, Obuchowski N, Ross JS, Modic MT. Interobserver and intraobserver variability in interpretation of lumbar disc abnormalities. A comparison of two nomenclatures. *Spine (Phila Pa 1976)*. 1995 Jun 1;20(11):1257-63; discussion 1264.
7. Modic MT, Steinberg PM, Ross JS, Masaryk TJ, Carter JR. Degenerative disk disease: assessment of changes in vertebral body marrow with MR imaging. *Radiology*. 1988 Jan;166(1 Pt 1):193-9.
8. Milette PC. The proper terminology for reporting lumbar intervertebral disk disorders. *AJNR Am J Neuroradiol*. 1997 Nov-Dec;18(10):1859-66.
9. Thompson JP, Pearce RH, Schechter MT, Adams ME, Tsang IK, Bishop PB. Preliminary evaluation of a scheme for grading the gross morphology of the

- human intervertebral disc. *Spine (Phila Pa 1976)*. 1990 May;15(5):411-5.
10. Antoniou J, Steffen T, Nelson F, Winterbottom N, Hollander AP, Poole RA, Aebi M, Alini M. The human lumbar intervertebral disc: evidence for changes in the biosynthesis and denaturation of the extracellular matrix with growth, maturation, ageing, and degeneration. *J Clin Invest*. 1996 Aug 15;98(4):996-1003.
  11. Urban JP, Smith S, Fairbank JC. Nutrition of the intervertebral disc. *Spine (Phila Pa 1976)*. 2004 Dec 1;29(23):2700-9.
  12. Nerlich AG, Schleicher ED, Boos N. 1997 Volvo Award winner in basic science studies. Immunohistologic markers for age-related changes of human lumbar intervertebral discs. *Spine (Phila Pa 1976)*. 1997 Dec 15;22(24):2781-95.
  13. Trout JJ, Buckwalter JA, Moore KC. Ultrastructure of the human intervertebral disc: II. Cells of the nucleus pulposus. *Anat Rec*. 1982 Dec;204(4):307-14.
  14. Gruber HE, Ingram JA, Norton HJ, Hanley EN Jr. Senescence in cells of the aging and degenerating intervertebral disc: immunolocalization of senescence-associated beta-galactosidase in human and sand rat discs. *Spine (Phila Pa 1976)*. 2007 Feb 1;32(3):321-7.
  15. Roberts S, Evans EH, Kletsas D, Jaffray DC, Eisenstein SM. Senescence in human intervertebral discs. *Eur Spine J*. 2006 Aug;15 Suppl 3:S312-6.
  16. Buckwalter JA. Aging and degeneration of the human intervertebral disc. *Spine (Phila Pa 1976)*. 1995 Jun 1;20(11):1307-14.
  17. Johnstone B, Bayliss MT. The large proteoglycans of the human intervertebral disc. Changes in their biosynthesis and structure with age, topography, and pathology. *Spine (Phila Pa 1976)*. 1995 Mar 15;20(6):674-84.
  18. Bushell GR, Ghosh P, Taylor TF, Akeson WH. Proteoglycan chemistry of the intervertebral disks. *Clin Orthop Relat Res*. 1977 Nov-Dec;(129):115-23.
  19. Comper WD, Preston BN. Model connective-tissue systems. A study of polyion-mobile ion and of excluded-volume interactions of proteoglycans. *Biochem J*. 1974 Oct;143(1):1-9.
  20. Adams P, Eyre DR, Muir H. Biochemical aspects of development and ageing of human lumbar intervertebral discs. *Rheumatol Rehabil*. 1977 Feb;16(1):22-9.
  21. Naylor A, Happey F, Turner RL, Shentall RD, West DC, Richardson C. Enzymic and immunological activity in the intervertebral disk. *Orthop Clin North Am*. 1975 Jan;6(1):51-8.
  22. Hirsch C, Paulson S, Sylven B, Snellman O. Biophysical and physiological investigations on cartilage and other mesenchymal tissues. VI. Characteristics of human nuclei pulposi during aging. *Acta Orthop Scand*. 1953;22(3):175-83.
  23. Haefeli M, Kalberer F, Saegesser D, Nerlich AG, Boos N, Paesold G. The course of macroscopic degeneration in the human lumbar intervertebral disc. *Spine (Phila Pa 1976)*. 2006 Jun 15;31(14):1522-31.
  24. Dickson IR, Happey F, Pearson CH, Naylor A, Turner RL. Variations in the protein components of human intervertebral disk with age. *Nature*. 1967 Jul 1;215(5096):52-3.
  25. Taylor TK, Little K. Intercellular matrix of the intervertebral disk in ageing and in prolapse. *Nature*. 1965 Oct 23;208(5008):384-6.
  26. Vernon-Roberts B, Pirie CJ. Degenerative changes in the intervertebral discs of the lumbar spine

- and their sequelae. *Rheumatol Rehabil.* 1977 Feb;16(1):13-21.
27. Marchand F, Ahmed AM. Investigation of the laminate structure of lumbar disc anulus fibrosus. *Spine (Phila Pa 1976).* 1990 May;15(5):402-10.
28. Lawrence JS. Disc degeneration. Its frequency and relationship to symptoms. *Ann Rheum Dis.* 1969 Mar;28(2):121-38.
29. Moneta GB, Videman T, Kaivanto K, Aprill C, Spivey M, Vanharanta H, Sachs BL, Guyer RD, Hochschuler SH, Raschbaum RF, et al. Reported pain during lumbar discography as a function of anular ruptures and disc degeneration. A re-analysis of 833 discograms. *Spine (Phila Pa 1976).* 1994 Sep 1;19(17):1968-74.
30. Scheuermann H. Kyphosis dorsalis juvenilis. *Z Orthop Chir.* 1921;41:4.
31. Schmorl K. Die pathogenese der juvenilen kyphose. *Fortschr Geb Rontgenstrahlen.* 1929/30;41:359.
32. McAfee PC. Scheuermann's Disease of the Thoracic and Lumbar Spine. 2002. Available at: <http://www.spine-health.com/conditions/scoliosis/scheuermanns-disease-thoracic-and-lumbar-spine>.
33. Buckwalter JA, Martin J. Intervertebral disc degeneration and back pain. In: Weinstein JN, Gordon SL, eds. *Low Back Pain: A Scientific and Clinical Overview.* Rosemont, IL: AAOS; 1996: 607-23.
34. Goel VK. Biomechanics of disc herniation and related issues. In: Weinstein JN, Gordon SL, eds. *Low Back Pain: A Scientific and Clinical Overview.* Rosemont, IL: AAOS; 1996:289-304.
35. van Tulder MW, Assendelft WJ, Koes BW, Bouter LM. Spinal radiographic findings and nonspecific low back pain. A systematic review of observational studies. *Spine (Phila Pa 1976).* 1997 Feb 15;22(4):427-34.
36. Jensen MC, Brant-Zawadzki MN, Obuchowski N, Modic MT, Malkasian D, Ross JS. Magnetic resonance imaging of the lumbar spine in people without back pain. *N Engl J Med.* 1994 Jul 14;331(2):69-73.
37. Videman T, Battié MC, Gibbons LE, Maravilla K, Manninen H, Kaprio J. Associations between back pain history and lumbar MRI findings. *Spine (Phila Pa 1976).* 2003 Mar 15;28(6):582-8.
38. Videman T, Nurminen M. The occurrence of anular tears and their relation to lifetime back pain history: a cadaveric study using barium sulfate discography. *Spine (Phila Pa 1976).* 2004 Dec 1;29(23):2668-76.
39. Schwarzer AC, Aprill CN, Derby R, Fortin J, Kine G, Bogduk N. The prevalence and clinical features of internal disc disruption in patients with chronic low back pain. *Spine (Phila Pa 1976).* 1995 Sep 1;20(17):1878-83.
40. Hassett G, Hart DJ, Manek NJ, Doyle DV, Spector TD. Risk factors for progression of lumbar spine disc degeneration: the Chingford Study. *Arthritis Rheum.* 2003 Nov;48(11):3112-7.
41. Pye SR, Reid DM, Smith R, Adams JE, Nelson K, Silman AJ, O'Neill TW. Radiographic features of lumbar disc degeneration and self-reported back pain. *J Rheumatol.* 2004 Apr;31(4):753-8.
42. Frymoyer JW, Newberg A, Pope MH, Wilder DG, Clements J, MacPherson B. Spine radiographs in patients with low-back pain. An epidemiological study in men. *J Bone Joint Surg Am.* 1984 Sep;66(7):1048-55.
43. Torgerson WR, Dotter WE. Comparative roentgenographic study of the asymptomatic and symptomatic lumbar

- spine. *J Bone Joint Surg Am.* 1976 Sep;58(6):850-3.
44. Symmons DP, van Hemert AM, Vandenbroucke JP, Valkenburg HA. A longitudinal study of back pain and radiological changes in the lumbar spines of middle aged women. II. Radiographic findings. *Ann Rheum Dis.* 1991 Mar;50(3):162-6.
45. de Schepper EI, Damen J, van Meurs JB, Ginai AZ, Popham M, Hofman A, Koes BW, Bierma-Zeinstra SM. The association between lumbar disc degeneration and low back pain: the influence of age, gender, and individual radiographic features. *Spine (Phila Pa 1976).* 2010 Mar 1;35(5):531-6.
46. Hamanishi C, Kawabata T, Yosii T, Tanaka S. Schmorl's nodes on magnetic resonance imaging. Their incidence and clinical relevance. *Spine (Phila Pa 1976).* 1994 Feb 15;19(4):450-3.
47. Boos N, Rieder R, Schade V, Spratt KF, Semmer N, Aebi M. 1995 Volvo Award in clinical sciences. The diagnostic accuracy of magnetic resonance imaging, work perception, and psychosocial factors in identifying symptomatic disc herniations. *Spine (Phila Pa 1976).* 1995 Dec 15;20(24):2613-25.
48. Edgar MA. The nerve supply of the lumbar intervertebral disc. *J Bone Joint Surg Br.* 2007 Sep;89(9):1135-9.
49. Fagan A, Moore R, Vernon Roberts B, Blumbergs P, Fraser R. ISSLS prize winner: The innervation of the intervertebral disc: a quantitative analysis. *Spine (Phila Pa 1976).* 2003 Dec 1;28(23):2570-6.
50. Kuslich SD, Ulstrom CL, Michael CJ. The tissue origin of low back pain and sciatica: a report of pain response to tissue stimulation during operations on the lumbar spine using local anesthesia. *Orthop Clin North Am.* 1991 Apr;22(2):181-7.
51. Johnson WE, Patterson AM, Eisenstein SM, Roberts S. The presence of pleiotrophin in the human intervertebral disc is associated with increased vascularization: an immunohistologic study. *Spine (Phila Pa 1976).* 2007 May 20;32(12):1295-302.
52. Freemont AJ, Peacock TE, Goupille P, Hoyland JA, O'Brien J, Jayson MI. Nerve ingrowth into diseased intervertebral disc in chronic back pain. *Lancet.* 1997 Jul 19;350(9072):178-81.
53. Andersson GB. The epidemiology of spinal disorders. In: Frymoyer W, ed. *Adult Spine: Principles and Practice.* 2nd ed. Philadelphia: Lippincott-Raven; 1997:114-9.
54. Frymoyer JW. Lumbar disk disease: epidemiology. *Instr Course Lect.* 1992;41:217-23.
55. Videman T, Battié MC. A critical review of the epidemiology of idiopathic low back pain. In: Weinstein JN, Gordon SL, eds. *Low Back Pain: A Scientific and Clinical Overview.* Rosemont, IL: AAOS; 1996:317-32.
56. Ala-Kokko L. Genetic risk factors for lumbar disc disease. *Ann Med.* 2002;34(1):42-7.
57. Battié MC, Videman T, Parent E. Lumbar disc degeneration: epidemiology and genetic influences. *Spine (Phila Pa 1976).* 2004 Dec 1;29(23):2679-90.
58. Modic MT, Ross JS. Lumbar degenerative disk disease. *Radiology.* 2007 Oct;245(1):43-61.
59. Miller JA, Schmatz C, Schultz AB. Lumbar disc degeneration: correlation with age, sex, and spine level in 600 autopsy specimens. *Spine (Phila Pa 1976).* 1988 Feb;13(2):173-8.
60. Battié MC, Videman T, Gibbons LE, Fisher LD, Manninen H, Gill K. 1995 Volvo Award in clinical sciences. Determinants of lumbar disc

- degeneration. A study relating lifetime exposures and magnetic resonance imaging findings in identical twins. *Spine (Phila Pa 1976)*. 1995 Dec 15;20(24):2601-12.
61. Kalichman L, Guermazi A, Li L, Hunter DJ. Association between age, sex, BMI and CT-evaluated spinal degeneration features. *J Back Musculoskelet Rehabil*. 2009;22(4):189-95.
62. Livshits G, Cohen Z, Higla O, Yakovenko K. Familial history, age and smoking are important risk factors for disc degeneration disease in Arabic pedigrees. *Eur J Epidemiol*. 2001;17(7):643-51.
63. Hangai M, Kaneoka K, Kuno S, Hinotsu S, Sakane M, Mamizuka N, Sakai S, Ochiai N. Factors associated with lumbar intervertebral disc degeneration in the elderly. *Spine J*. 2008 Sep-Oct;8(5):732-40.
64. Cheung KM, Karppinen J, Chan D, Ho DW, Song YQ, Sham P, Cheah KS, Leong JC, Luk KD. Prevalence and pattern of lumbar magnetic resonance imaging changes in a population study of one thousand forty-three individuals. *Spine (Phila Pa 1976)*. 2009 Apr 20;34(9):934-40.
65. Goh S, Tan C, Price RI, Edmondston SJ, Song S, Davis S, Singer KP. Influence of age and gender on thoracic vertebral body shape and disc degeneration: an MR investigation of 169 cases. *J Anat*. 2000 Nov;197 Pt 4:647-57.
66. Vucetic N, Astrand P, Güntner P, Svensson O. Diagnosis and prognosis in lumbar disc herniation. *Clin Orthop Relat Res*. 1999 Apr;(361):116-22.
67. Kalichman L, Hodges P, Li L, Guermazi A, Hunter DJ. Changes in paraspinal muscles and their association with low back pain and spinal degeneration: CT study. *Eur Spine J*. 2010 Jul;19(7):1136-44.
68. Liuke M, Solovieva S, Lamminen A, Luoma K, Leino-Arjas P, Luukkonen R, Riihimäki H. Disc degeneration of the lumbar spine in relation to overweight. *Int J Obes (Lond)*. 2005 Aug;29(8):903-8.
69. Rodacki AL, Fowler NE, Provensi CL, Rodacki Cde L, Dezan VH. Body mass as a factor in stature change. *Clin Biomech (Bristol, Avon)*. 2005 Oct;20(8):799-805.
70. Hangai M, Kaneoka K, Kuno S, Hinotsu S, Sakane M, Mamizuka N, Sakai S, Ochiai N. Factors associated with lumbar intervertebral disc degeneration in the elderly. *Spine J*. 2008 Sep-Oct;8(5):732-40.
71. Williams FM, Popham M, Livshits G, Sambrook PN, Spector TD, MacGregor AJ. A response to Videman et al., "challenging the cumulative injury model: positive effects of greater body mass on disc degeneration". *Spine J*. 2010 Jun;10(6):571-2; author reply 572.
72. Allan DB, Waddell G. An historical perspective on low back pain and disability. *Acta Orthop Scand Suppl*. 1989;234:1-23.
73. Adams MA, Freeman BJ, Morrison HP, Nelson IW, Dolan P. Mechanical initiation of intervertebral disc degeneration. *Spine (Phila Pa 1976)*. 2000 Jul 1;25(13):1625-36.
74. Videman T, Nurminen M, Troup JD. 1990 Volvo Award in clinical sciences. Lumbar spinal pathology in cadaveric material in relation to history of back pain, occupation, and physical loading. *Spine (Phila Pa 1976)*. 1990 Aug;15(8):728-40.
75. Elfering A, Semmer N, Birkhofer D, Zanetti M, Hodler J, Boos N. Risk factors for lumbar disc degeneration: a 5-year prospective MRI study in asymptomatic individuals. *Spine (Phila Pa 1976)*. 2002 Jan 15;27(2):125-34.

76. Battié MC, Videman T, Gibbons LE, Manninen H, Gill K, Pope M, Kaprio J. Occupational driving and lumbar disc degeneration: a case-control study. *Lancet*. 2002 Nov 2;360(9343):1369-74.
77. Videman T, Battié MC. The influence of occupation on lumbar degeneration. *Spine (Phila Pa 1976)*. 1999 Jun 1;24(11):1164-8.
78. Hangai M, Kaneoka K, Hinotsu S, Shimizu K, Okubo Y, Miyakawa S, Mukai N, Sakane M, Ochiai N. Lumbar intervertebral disk degeneration in athletes. *Am J Sports Med*. 2009 Jan;37(1):149-55.
79. Heliövaara M. Risk factors for low back pain and sciatica. *Ann Med*. 1989 Aug;21(4):257-64.
80. Jensen MV, Tüchsen F, Orhede E. Prolapsed cervical intervertebral disc in male professional drivers in Denmark, 1981-1990. A longitudinal study of hospitalizations. *Spine (Phila Pa 1976)*. 1996 Oct 15;21(20):2352-5.
81. Luoma K, Riihimäki H, Raininko R, Luukkonen R, Lamminen A, Viikari-Juntura E. Lumbar disc degeneration in relation to occupation. *Scand J Work Environ Health*. 1998 Oct;24(5):358-66.
82. Saftić R, Grgić M, Ebling B, Splavski B. Case-control study of risk factors for lumbar intervertebral disc herniation in Croatian island populations. *Croat Med J*. 2006 Aug;47(4):593-600.
83. Espinoza Orías AA, Malhotra NR, Elliott DM. Rat disc torsional mechanics: effect of lumbar and caudal levels and axial compression load. *Spine J*. 2009 Mar;9(3):204-9.
84. An HS, Masuda K. Relevance of in vitro and in vivo models for intervertebral disc degeneration. *J Bone Joint Surg Am*. 2006 Apr;88 Suppl 2:88-94.
85. Eck JC, Humphreys SC, Hodges SD. Adjacent-segment degeneration after lumbar fusion: a review of clinical, biomechanical, and radiologic studies. *Am J Orthop (Belle Mead NJ)*. 1999 Jun;28(6):336-40.
86. Schnake KJ, Putzier M, Haas NP, Kandziora F. Mechanical concepts for disc regeneration. *Eur Spine J*. 2006 Aug;15 Suppl 3:S354-60.
87. Hadjipavlou AG, Tzermiadianos MN, Bogduk N, Zindrick MR. The pathophysiology of disc degeneration: a critical review. *J Bone Joint Surg Br*. 2008 Oct;90(10):1261-70.
88. Vernon-Roberts B, Fazzalari NL, Manthey BA. Pathogenesis of tears of the annulus investigated by multiple-level transaxial analysis of the T12-L1 disc. *Spine (Phila Pa 1976)*. 1997 Nov 15;22(22):2641-6.
89. Paaajanen H, Alanen A, Erkinntalo M, Salminen JJ, Katevuo K. Disc degeneration in Scheuermann disease. *Skeletal Radiol*. 1989;18(7):523-6.
90. Banerian KG, Wang AM, Samberg LC, Kerr HH, Wesolowski DP. Association of vertebral end plate fracture with pediatric lumbar intervertebral disk herniation: value of CT and MR imaging. *Radiology*. 1990 Dec;177(3):763-5.
91. Nachemson A, Lewin T, Maroudas A, Freeman MA. In vitro diffusion of dye through the end-plates and the annulus fibrosus of human lumbar inter-vertebral discs. *Acta Orthop Scand*. 1970;41(6):589-607.
92. Holm S, Maroudas A, Urban JP, Selstam G, Nachemson A. Nutrition of the intervertebral disc: solute transport and metabolism. *Connect Tissue Res*. 1981;8(2):101-19.
93. Crock HV, Goldwasser M, Yoshizawa H. Vascular anatomy related to the intervertebral disc. In: Raton GB, ed. *Biology of the Intervertebral Disc*. Boca Raton: CRC Press; 1991:109-33.
94. Boos N, Weissbach S, Rohrbach H, Weiler C, Spratt KF, Nerlich AG.



- Classification of age-related changes in lumbar intervertebral discs: 2002 Volvo Award in basic science. *Spine (Phila Pa 1976)*. 2002 Dec 1;27(23):2631-44.
95. Bartels EM, Fairbank JC, Winlove CP, Urban JP. Oxygen and lactate concentrations measured in vivo in the intervertebral discs of patients with scoliosis and back pain. *Spine (Phila Pa 1976)*. 1998 Jan 1;23(1):1-7; discussion 8.
96. Kauppila LI, McAlindon T, Evans S, Wilson PW, Kiel D, Felson DT. Disc degeneration/back pain and calcification of the abdominal aorta. A 25-year follow-up study in Framingham. *Spine (Phila Pa 1976)*. 1997 Jul 15;22(14):1642-7; discussion 1648-9.
97. An HS, Silveri CP, Simpson JM, File P, Simmons C, Simeone FA, Balderston RA. Comparison of smoking habits between patients with surgically confirmed herniated lumbar and cervical disc disease and controls. *J Spinal Disord*. 1994 Oct;7(5):369-73.
98. Battié MC, Videman T, Gill K, Moneta GB, Nyman R, Kaprio J, Koskenvuo M. 1991 Volvo Award in clinical sciences. Smoking and lumbar intervertebral disc degeneration: an MRI study of identical twins. *Spine (Phila Pa 1976)*. 1991 Sep;16(9):1015-21.
99. Kelsey JL, Githens PB, O'Conner T, Weil U, Calogero JA, Holford TR, White AA 3rd, Walter SD, Ostfeld AM, Southwick WO. Acute prolapsed lumbar intervertebral disc. An epidemiologic study with special reference to driving automobiles and cigarette smoking. *Spine (Phila Pa 1976)*. 1984 Sep;9(6):608-13.
100. Holm S, Nachemson A. Nutrition of the intervertebral disc: acute effects of cigarette smoking. An experimental animal study. *Ups J Med Sci*. 1988;93(1):91-9.
101. Iwahashi M, Matsuzaki H, Tokuhashi Y, Wakabayashi K, Uematsu Y. Mechanism of intervertebral disc degeneration caused by nicotine in rabbits to explicate intervertebral disc disorders caused by smoking. *Spine (Phila Pa 1976)*. 2002 Jul 1;27(13):1396-401.
102. Roberts S, Urban JP, Evans H, Eisenstein SM. Transport properties of the human cartilage endplate in relation to its composition and calcification. *Spine (Phila Pa 1976)*. 1996 Feb 15;21(4):415-20.
103. Grobler LJ, Simmons EH, Barrington TW. Intervertebral disc herniation in the adolescent. *Spine (Phila Pa 1976)*. 1979 May-Jun;4(3):267-78.
104. Matsui H, Terahata N, Tsuji H, Hirano N, Naruse Y. Familial predisposition and clustering for juvenile lumbar disc herniation. *Spine (Phila Pa 1976)*. 1992 Nov;17(11):1323-8.
105. Varlotta GP, Brown MD, Kelsey JL, Golden AL. Familial predisposition for herniation of a lumbar disc in patients who are less than twenty-one years old. *J Bone Joint Surg Am*. 1991 Jan;73(1):124-8.
106. Frino J, McCarthy RE, Sparks CY, McCullough FL. Trends in adolescent lumbar disk herniation. *J Pediatr Orthop*. 2006 Sep-Oct;26(5):579-81.
107. Postacchini F, Lami R, Pugliese O. Familial predisposition to discogenic low-back pain. An epidemiologic and immunogenetic study. *Spine (Phila Pa 1976)*. 1988 Dec;13(12):1403-6.
108. Simmons ED Jr, Guntupalli M, Kowalski JM, Braun F, Seidel T. Familial predisposition for degenerative disc disease. A case-control study. *Spine (Phila Pa 1976)*. 1996 Jul 1;21(13):1527-9.
109. Richardson JK, Chung T, Schultz JS, Hurvitz E. A familial predisposition toward lumbar disc injury. *Spine (Phila Pa 1976)*. 1997 Jul 1;22(13):1487-92; discussion 1493.

110. Matsui H, Kanamori M, Ishihara H, Yudoh K, Naruse Y, Tsuji H. Familial predisposition for lumbar degenerative disc disease. A case-control study. *Spine (Phila Pa 1976)*. 1998 May 1;23(9):1029-34.
111. Battié MC, Haynor DR, Fisher LD, Gill K, Gibbons LE, Videman T. Similarities in degenerative findings on magnetic resonance images of the lumbar spines of identical twins. *J Bone Joint Surg Am*. 1995 Nov;77(11):1662-70.
112. Sambrook PN, MacGregor AJ, Spector TD. Genetic influences on cervical and lumbar disc degeneration: a magnetic resonance imaging study in twins. *Arthritis Rheum*. 1999 Feb;42(2):366-72.
113. Bijkerk C, Houwing-Duistermaat JJ, Valkenburg HA, Meulenbelt I, Hofman A, Breedveld FC, Pols HA, van Duijn CM, Slagboom PE. Heritabilities of radiologic osteoarthritis in peripheral joints and of disc degeneration of the spine. *Arthritis Rheum*. 1999 Aug;42(8):1729-35.
114. Pluijm SM, van Essen HW, Bravenboer N, Uitterlinden AG, Smit JH, Pols HA, Lips P. Collagen type I alpha1 Sp1 polymorphism, osteoporosis, and intervertebral disc degeneration in older men and women. *Ann Rheum Dis*. 2004 Jan;63(1):71-7.
115. Tilkeridis C, Bei T, Garantziotis S, Stratakis CA. Association of a COL1A1 polymorphism with lumbar disc disease in young military recruits. *J Med Genet*. 2005 Jul;42(7):e44.
116. Annunen S, Paassilta P, Lohiniva J, Perälä M, Pihlajamaa T, Karppinen J, Tervonen O, Kröger H, Lähde S, Vanharanta H, Ryhänen L, Göring HH, Ott J, Prockop DJ, Ala-Kokko L. An allele of COL9A2 associated with intervertebral disc disease. *Science*. 1999 Jul 16;285(5426):409-12.
117. Jim JJ, Noponen-Hietala N, Cheung KM, Ott J, Karppinen J, Sahraravand A, Luk KD, Yip SP, Sham PC, Song YQ, Leong JC, Cheah KS, Ala-Kokko L, Chan D. The TRP2 allele of COL9A2 is an age-dependent risk factor for the development and severity of intervertebral disc degeneration. *Spine (Phila Pa 1976)*. 2005 Dec 15;30(24):2735-42.
118. Kales SN, Linos A, Chatzis C, Sai Y, Halla M, Nasioulas G, Christiani DC. The role of collagen IX tryptophan polymorphisms in symptomatic intervertebral disc disease in Southern European patients. *Spine (Phila Pa 1976)*. 2004 Jun 1;29(11):1266-70.
119. Karppinen J, Pääkkö E, Räninä S, Tervonen O, Kurunlahti M, Nieminen P, Ala-Kokko L, Malmivaara A, Vanharanta H. Magnetic resonance imaging findings in relation to the COL9A2 tryptophan allele among patients with sciatica. *Spine (Phila Pa 1976)*. 2002 Jan 1;27(1):78-83.
120. Noponen-Hietala N, Kyllönen E, Männikkö M, Ilkko E, Karppinen J, Ott J, Ala-Kokko L. Sequence variations in the collagen IX and XI genes are associated with degenerative lumbar spinal stenosis. *Ann Rheum Dis*. 2003 Dec;62(12):1208-14.
121. Paassilta P, Lohiniva J, Göring HH, Perälä M, Räninä SS, Karppinen J, Hakala M, Palm T, Kröger H, Kaitila I, Vanharanta H, Ott J, Ala-Kokko L. Identification of a novel common genetic risk factor for lumbar disk disease. *JAMA*. 2001 Apr 11;285(14):1843-9.
122. Seki S, Kawaguchi Y, Mori M, Mio F, Chiba K, Mikami Y, Tsunoda T, Kubo T, Toyama Y, Kimura T, Ikegawa S. Association study of COL9A2 with lumbar disc disease in the Japanese population. *J Hum Genet*. 2006;51(12):1063-7.

123. Solovieva S, Lohiniva J, Leino-Arjas P, Raininko R, Luoma K, Ala-Kokko L, Riihimäki H. COL9A3 gene polymorphism and obesity in intervertebral disc degeneration of the lumbar spine: evidence of gene-environment interaction. *Spine (Phila Pa 1976)*. 2002 Dec 1;27(23):2691-6.
124. Solovieva S, Lohiniva J, Leino-Arjas P, Raininko R, Luoma K, Ala-Kokko L, Riihimäki H. Intervertebral disc degeneration in relation to the COL9A3 and the IL-1beta gene polymorphisms. *Eur Spine J*. 2006 May;15(5):613-9.
125. Wrocklage C, Wassmann H, Paulus W. COL9A2 allelotypes in intervertebral disc disease. *Biochem Biophys Res Commun*. 2000 Dec 20;279(2):398-400.
126. Higashino K, Matsui Y, Yagi S, Takata Y, Goto T, Sakai T, Katoh S, Yasui N. The alpha2 type IX collagen tryptophan polymorphism is associated with the severity of disc degeneration in younger patients with herniated nucleus pulposus of the lumbar spine. *Int Orthop*. 2007 Feb;31(1):107-11.
127. Solovieva S, Kouhia S, Leino-Arjas P, Ala-Kokko L, Luoma K, Raininko R, Saarela J, Riihimäki H. Interleukin 1 polymorphisms and intervertebral disc degeneration. *Epidemiology*. 2004 Sep;15(5):626-33.
128. Virtanen IM, Song YQ, Cheung KM, Ala-Kokko L, Karppinen J, Ho DW, Luk KD, Yip SP, Leong JC, Cheah KS, Sham P, Chan D. Phenotypic and population differences in the association between CILP and lumbar disc disease. *J Med Genet*. 2007 Apr;44(4):285-8.
129. Cheung KM, Chan D, Karppinen J, Chen Y, Jim JJ, Yip SP, Ott J, Wong KK, Sham P, Luk KD, Cheah KS, Leong JC, Song YQ. Association of the Taq I allele in vitamin D receptor with degenerative disc disease and disc bulge in a Chinese population. *Spine (Phila Pa 1976)*. 2006 May 1;31(10):1143-8.
130. Kawaguchi Y, Kanamori M, Ishihara H, Ohmori K, Matsui H, Kimura T. The association of lumbar disc disease with vitamin-D receptor gene polymorphism. *J Bone Joint Surg Am*. 2002 Nov;84-A(11):2022-8.
131. Valdes AM, Hassett G, Hart DJ, Spector TD. Radiographic progression of lumbar spine disc degeneration is influenced by variation at inflammatory genes: a candidate SNP association study in the Chingford cohort. *Spine (Phila Pa 1976)*. 2005 Nov 1;30(21):2445-51.
132. Videman T, Gibbons LE, Battié MC, Maravilla K, Vanninen E, Leppävuori J, Kaprio J, Peltonen L. The relative roles of intragenic polymorphisms of the vitamin d receptor gene in lumbar spine degeneration and bone density. *Spine (Phila Pa 1976)*. 2001 Feb 1;26(3):E7-E12.
133. Videman T, Leppävuori J, Kaprio J, Battié MC, Gibbons LE, Peltonen L, Koskenvuo M. Intragenic polymorphisms of the vitamin D receptor gene associated with intervertebral disc degeneration. *Spine (Phila Pa 1976)*. 1998 Dec 1;23(23):2477-85.
134. Jones G, White C, Sambrook P, Eisman J. Allelic variation in the vitamin D receptor, lifestyle factors and lumbar spinal degenerative disease. *Ann Rheum Dis*. 1998 Feb;57(2):94-9.
135. Kawaguchi Y, Osada R, Kanamori M, Ishihara H, Ohmori K, Matsui H, Kimura T. Association between an aggrecan gene polymorphism and lumbar disc degeneration. *Spine (Phila Pa 1976)*. 1999 Dec 1;24(23):2456-60.
136. Roughley P, Martens D, Rantakokko J, Alini M, Mwale F, Antoniou J. The

- involvement of aggrecan polymorphism in degeneration of human intervertebral disc and articular cartilage. *Eur Cell Mater.* 2006 Jan 18;11:1-7; discussion 7.
137. Watanabe H, Nakata K, Kimata K, Nakanishi I, Yamada Y. Dwarfism and age-associated spinal degeneration of heterozygote cmd mice defective in aggrecan. *Proc Natl Acad Sci U S A.* 1997 Jun 24;94(13):6943-7.
138. Mashayekhi F, Shafiee G, Kazemi M, Dolati P. Lumbar disk degeneration disease and aggrecan gene polymorphism in northern Iran. *Biochem Genet.* 2010 Aug;48(7-8):684-9.
139. Gruber HE, Norton HJ, Ingram JA, Hanley EN Jr. The SOX9 transcription factor in the human disc: decreased immunolocalization with age and disc degeneration. *Spine (Phila Pa 1976).* 2005 Mar 15;30(6):625-30.
140. Paul R, Haydon RC, Cheng H, Ishikawa A, Nenadovich N, Jiang W, Zhou L, Breyer B, Feng T, Gupta P, He TC, Phillips FM. Potential use of Sox9 gene therapy for intervertebral degenerative disc disease. *Spine (Phila Pa 1976).* 2003 Apr 15;28(8):755-63.
141. Takahashi M, Haro H, Wakabayashi Y, Kawa-uchi T, Komori H, Shinomiya K. The association of degeneration of the intervertebral disc with 5a/6a polymorphism in the promoter of the human matrix metalloproteinase-3 gene. *J Bone Joint Surg Br.* 2001 May;83(4):491-5.
142. Seki S, Kawaguchi Y, Chiba K, Mikami Y, Kizawa H, Oya T, Mio F, Mori M, Miyamoto Y, Masuda I, Tsunoda T, Kamata M, Kubo T, Toyama Y, Kimura T, Nakamura Y, Ikegawa S. A functional SNP in CILP, encoding cartilage intermediate layer protein, is associated with susceptibility to lumbar disc disease. *Nat Genet.* 2005 Jun;37(6):607-12.
143. Livshits G, Ermakov S, Popham M, Macgregor AJ, Sambrook PN, Spector TD, Williams FM. Evidence that bone mineral density plays a role in degenerative disc disease: the UK Twin Spine Study. *Ann Rheum Dis.* 2010 Jun 22. [Epub ahead of print]
144. Cong L, Pang H, Xuan D, Tu G. The interaction between aggrecan gene VNTR polymorphism and cigarette smoking in predicting incident symptomatic intervertebral disc degeneration. *Connect Tissue Res.* 2010 Oct;51(5):397-403.
145. Chan D, Song Y, Sham P, Cheung KM. Genetics of disc degeneration. *Eur Spine J.* 2006 Aug;15 Suppl 3:S317-25.